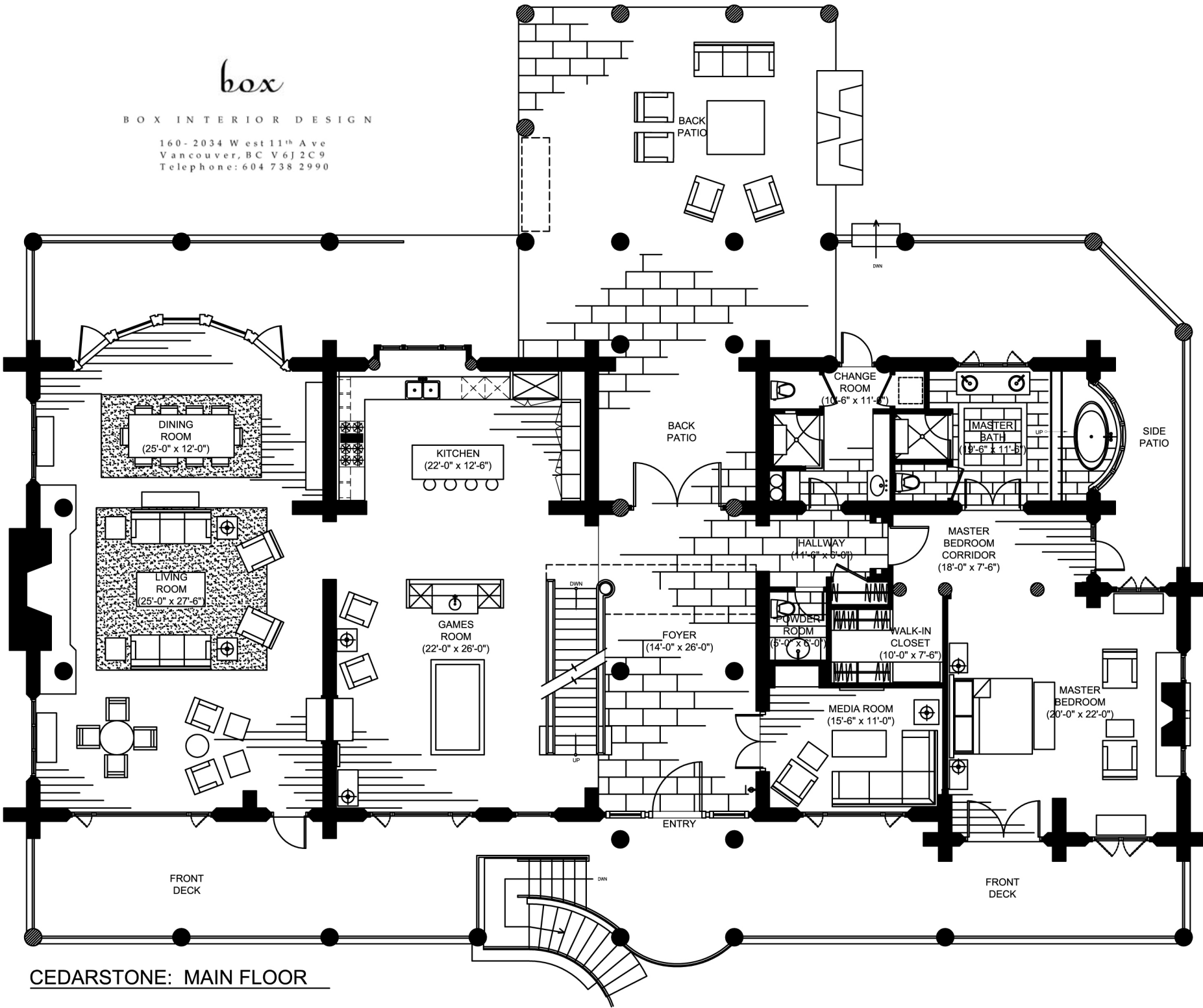


box

BOX INTERIOR DESIGN

160-2034 West 11th Ave
Vancouver, BC V6J 2C9
Telephone: 604 738 2990

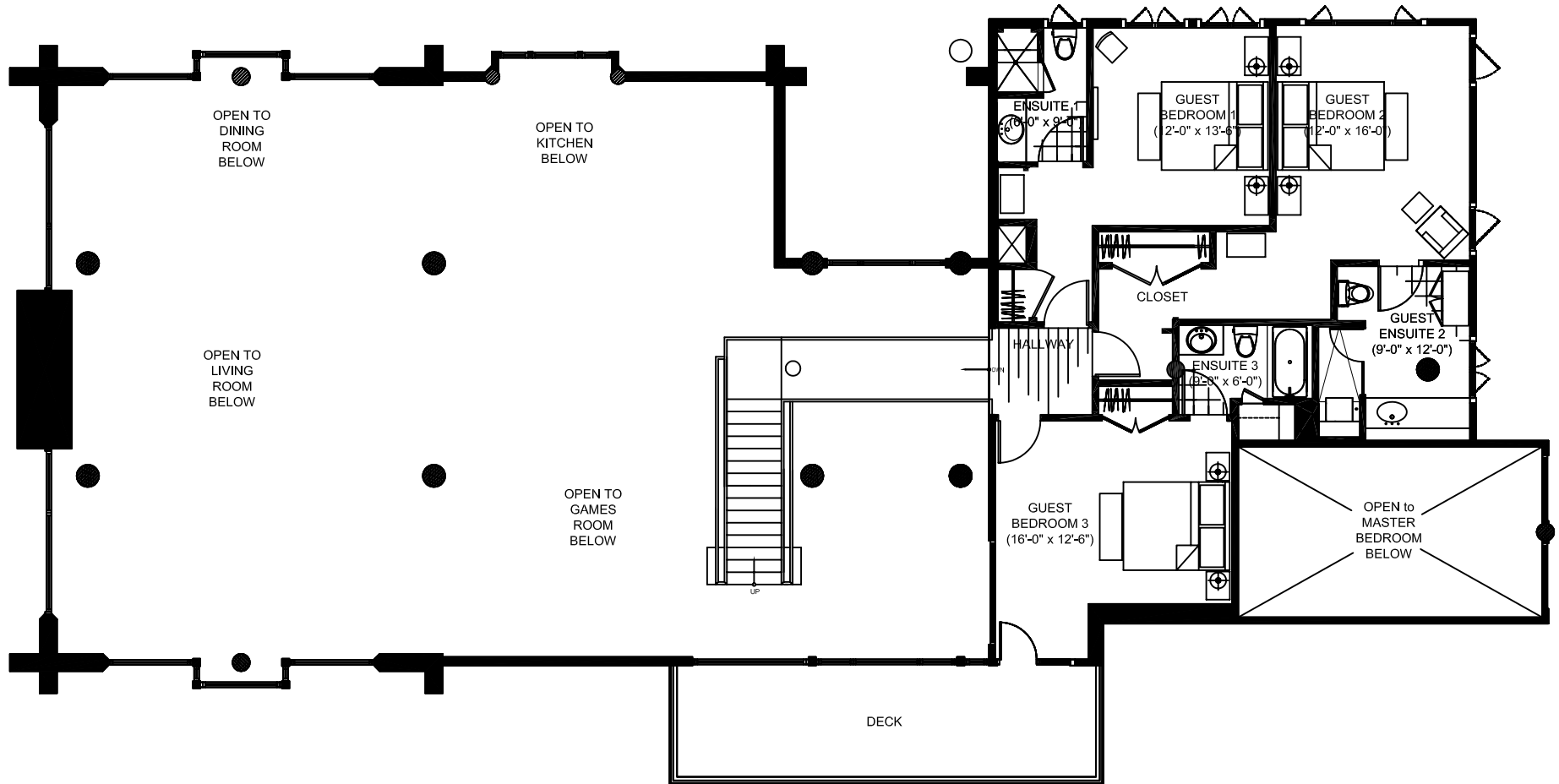


CEDARSTONE: MAIN FLOOR

box

BOX INTERIOR DESIGN

160-2034 West 11th Ave
Vancouver, BC V6J 2C9
Telephone: 604 738 2990

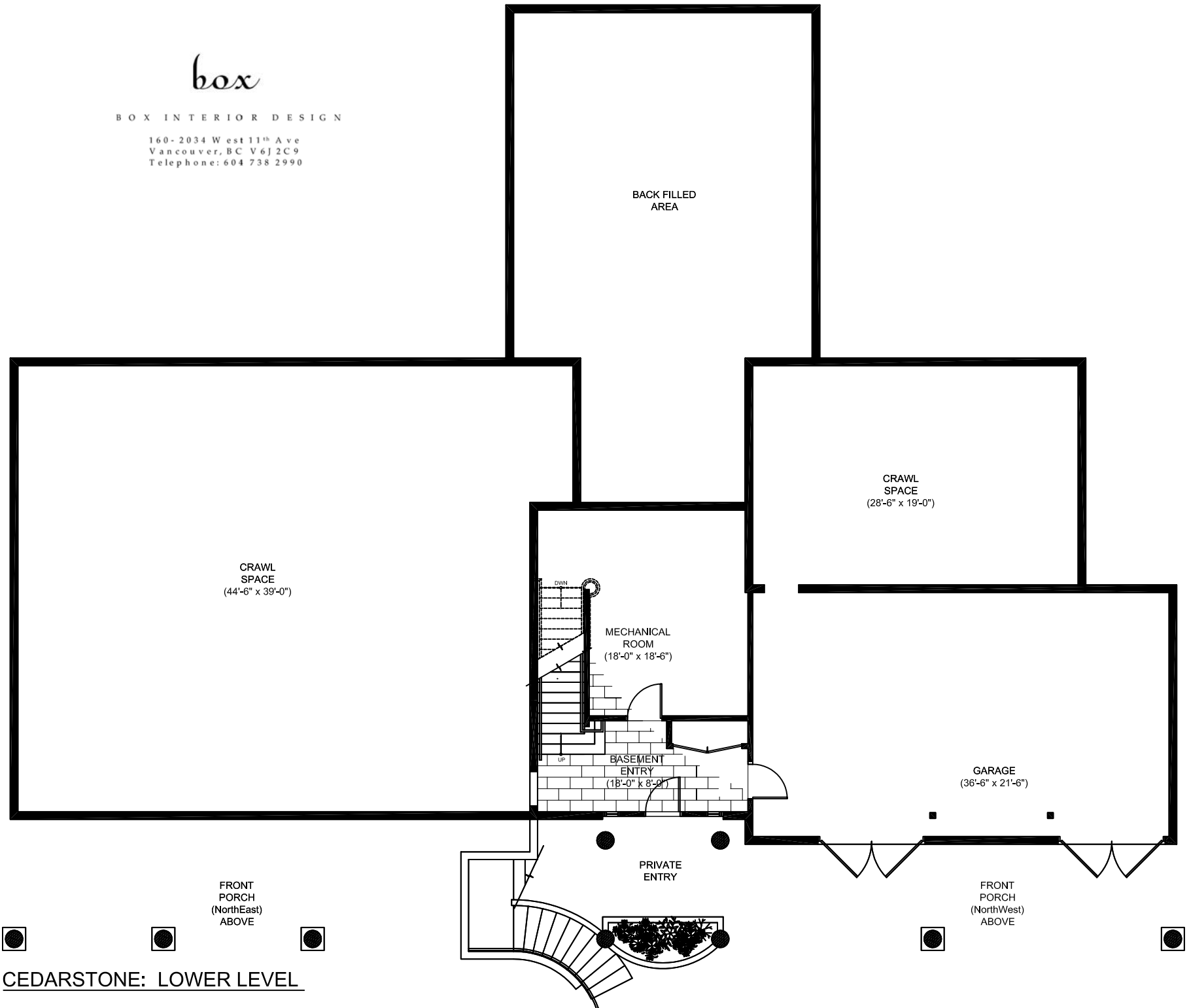


CEDARSTONE: UPPER FLOOR

box

BOX INTERIOR DESIGN

160-2034 West 11th Ave
Vancouver, BC V6J 2C9
Telephone: 604 738 2990



CEDARSTONE: LOWER LEVEL

MAIN FLOOR FEATURES

Main Entry & Foyer

- Stunning staircase featuring wrought iron and wood railings, as well as wood paneled coffers

Kitchen

- Huge full size open concept with awesome view to back forest and mountains
- Complete Viking appliance package including 42" refrigerator, 48" range, designer series dishwasher & convection microwave, range hood and garburator
- Loads of cupboard, counter & pantry space
- Elan Via/Valet 6.4 Colour Touch master control panel

Media Room/Study

- 50 inch Fujitsu plasma TV
- Elan MX-850 colour touch control panel
- Media cabinet complete with Marantz equipment

Powder Room

- Kohler faucet, sink and toilet
- Wawirka cast bronze freestanding basin

Spa Room

- Kohler faucet, sink and toilet
- Bosch Axxis washer & dryer
- Entrance to back patio & outdoor entertainment area

Great Room

- Vaulted ceiling with 26 foot fireplace
- Large seating area

Sitting Room

- Oversized windows bring the outdoors right inside
- Nice peaceful area to enjoy pondering life while looking out at the spectacular mountain scenery

Dining Room

- Spacious room with a built in side cabinet for china
- Beautiful 13' x 4' walnut Manor House table

Games Room

- Wet bar area with wine storage & Viking wine coolers
- 42 inch Fujitsu plasma TV and Marantz equipment
- Elan MX-3000 colour touch control panel

Master Bedroom

- Oversized closet/vanity with make up mirror
- Breathtaking mountain views
- Generous floor plan
- Lennox Direct Vent Elite Series gas fireplace
- 50 inch Fujitsu plasma TV
- Surround sound system with Marantz equipment
- Elan MX-850 colour touch control panel
- Entrance to front and back deck areas

Master Bath

- Spacious spa-like environment
- Beautifully finished with limestone and granite
- Orca Bath free standing step-up copper tub
- Steam shower with double rain shower heads and built-in shelves & seating
- Countertop mount polished copper sinks
- Thermasol Pro series thermostatically controlled retractable steam head with integral aroma oil well & elite temperature/time control

Back Patio & Outdoor Entertainment Area

- Coast Spas Unity hot tub and cultured stone sauna
- 1000 square foot covered pavilion
- 25 foot yellow cedar ceiling
- Fireplace
- Heated tiling with in-floor spotlights
- Beautifully surrounded by nature and stunning mountain views

On Property Walking Trails

- Numerous tree-line walking trails
- Picnic area atop a secluded deck below the property grade
- Awesome outdoor lighting including 8 tree stumps with up lights
- Private forest with stream
- Endless panoramic viewing opportunities

Golf Chipping Green

- 100 yard chipping green

UPPER FLOOR FEATURES

Guest Bedroom 1

- Wall mounted 26 inch Sharp plasma TV
- Distributed audio & wired for internet
- Built-in vanity and two large closets
- Beautifully finished private ensuite

Guest Bedroom 2

- Excellent viewing opportunities
- Wall mounted 26 inch Sharp plasma TV
- Distributed audio & wired for internet
- Built-in vanity and walk-in closet with organizer
- Beautifully finished private ensuite

Guest Bedroom 3

- Opens to a private balcony with a breathtaking view of mountain scenery
- Wall mounted 26 inch Sharp plasma TV
- Distributed audio & wired for internet
- Built-in vanity and spacious walk-in closet
- Beautifully finished private ensuite

Guest Ensuite 1

- Kohler faucet, sink & toilet
- Steam shower with built-in granite shelves & seating
- Granite counter tops & limestone flooring

Guest Ensuite 2

- Kohler faucet, sink & toilet
- Steam shower with built-in granite shelves & seating
- Thermasol Pro series thermostatically controlled retractable steam head with integral aroma oil well & elite temperature/time control
- Granite counter tops & limestone flooring

Guest Ensuite 3

- Kohler faucet, sink & toilet
- Kaldewei Saniform Plus bathtub
- Granite counter tops & limestone flooring

LOWER FLOOR FEATURES

Basement Entry

- Access to garage and mechanical room

Garage

- Finished three bay garage with heated floor
- Ample room for spacious parking and storage
- Access to 2000 square foot crawl space to be built out at a later date

Gated Entrance

- Equipped with security gate & camera at base of driveway

Driveway

- Beautifully landscaped circular interlocking brick driveway
- Internet based camera system for overall security and viewing from anywhere in the world